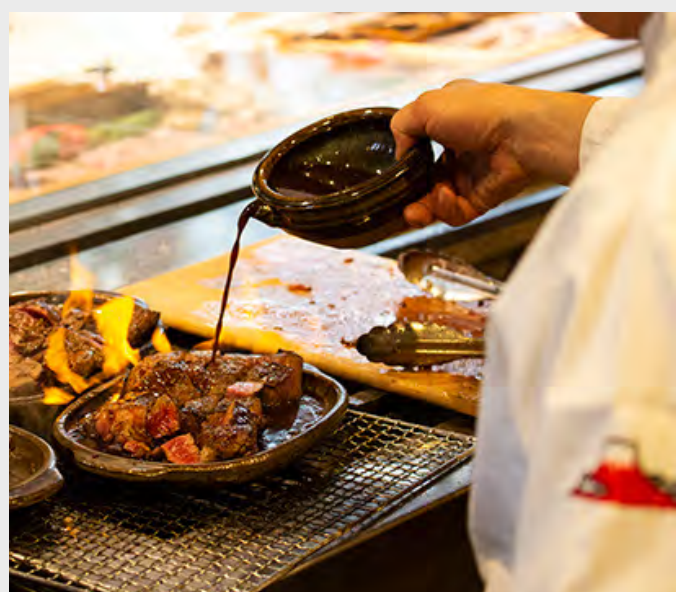


# ZEKKEI

## Restaurant Guide

IN NISEKO



### NISEKO NANIWATEI AT INTUITION

📍 Hirafu 🍴 Japanese (Under Renovation)

Using fresh local ingredients, showcasing a distinct sense of style called Robata Kaiseki style (traditional multi-course Japanese dinner)

11:30 for lunch, 17:30 for dinner

<http://www.robata-naniwatei.com/ja/>



### SUSHI SHIN BY MIYAKAWA

📍 Hirafu 🍴 Japanese (Under Renovation)

Produced by the three Michelin starred Masterchef Masaaki Miyakawa.

12:00 for lunch, 17:30/ 20:00 for dinner

[www.sushishin-niseko.jp](http://www.sushishin-niseko.jp)



### MAME Niseko

📍 Hirafu 🍴 Japanese

Contemporary Japanese Restaurant. The head-chef, Hideki Endo, studied under Nobuyuki Matsuhisa, who has won a Michelin star and operates the global restaurant chain NOBU.

12:00-15:00; 18:00-23:00  
(Closed on Sundays and Wednesdays)

[www.mame-restaurants.com](http://www.mame-restaurants.com)



### SUSHI KATO

📍 Hirafu/Setsu Niseko 🍴 Japanese Kaiseki

With over 50 years' experience and a stellar reputation for crab markets and restaurants in Sapporo and Niseko, Sushi Kato promises the ultimate ocean-to-table Japanese kaiseki experience.

[sushikato.jp/main](http://sushikato.jp/main)

[sushikato.jp/inori](http://sushikato.jp/inori)



## 阿武茶式 A-BU-CHA 2

📍 Hirafu      🍴 Izakaya

With a menu of excellent takes on standards of Japanese comfort food served with cold drinks in a typical izakaya atmosphere, A-Bu-Cha delivers a quintessentially Japanese dining experience in the heart of Hirafu.

[www.abucha.jp/top](http://www.abucha.jp/top)



## DINNING BY LUPICIA

📍 Hirafu      🍴 international cuisine

The restaurant serves meals all day from breakfast through dinner. Diners are welcomed with dishes made from handpicked, locally sourced ingredients and warm hospitality.

[www.lupicia.co.jp/sansuiniseko](http://www.lupicia.co.jp/sansuiniseko)



## HIRAFU ZAKA

📍 Hirafu      🍴 Izakaya

Grab a bite to eat at our Izakaya offering enticing Japanese casual cuisine. Open daily for lunch and dinner.

\*For walk-in only

[www.chaletivy.com/hirafu/dining/hirafuzaka](http://www.chaletivy.com/hirafu/dining/hirafuzaka)



## CARB DINING KANON

📍 Hirafu      🍴 Japanese

Delicately prepared course dinner of local food, crabs, seafood and shabu-shabu.

[www.niseko-crab-kanon.com](http://www.niseko-crab-kanon.com)



## J'AI LA PATATE

📍 Abuta Gun      🍴 French

A Cozy French Restaurant. Featuring classic French cuisine with a creative twist.

It's the perfect spot for a romantic dinner or a night out with friends and family.

(Closed on Wednesdays)

[www.patate.hokkaido.jp](http://www.patate.hokkaido.jp)



## TEMPURA ARAKI

📍 Setsu Niseko 🍴 Tempura

The new sister restaurant of Sapporo's two-Michelin star 'Tempura Araki', specializing in tempura Omakase

11:30-14:00 for lunch; 17:00 - 23:00 for dinner

[www.setsuniseko.com/en/dining/tempura-araki](http://www.setsuniseko.com/en/dining/tempura-araki)



## AFURI

📍 Setsu Niseko 🍴 Ramen

AFURI is a popular ramen restaurants in Japan with stylish décor, good vibes playlist and delicious daily handcrafted noodles. AFURI now brings its famous yuzu ramen direct to Hokkaido.

11:00-15:00 for lunch; 17:00 - 22:00 for dinner

[www.afuri.com](http://www.afuri.com)



## NISEKO LOFT CLUB

📍 Niseko 🍴 Japanese BBQ

A popular indoor BBQ restaurant specialising in Ghengis Khan which is a Hokkaido dish. Their signature dishes is a plate of special a tray of fresh cuts, provide fresh lamb Jingiskan, Beef Rib Roast and Hokkaido EZO Venison.

17:00-22:00 (Close on Tuesdays)

[www.loftclub1989.com](http://www.loftclub1989.com)



## MÉLI MÉLO -YUKI NO KOE

📍 Setsu Niseko 🍴 French & Italian

méli mélo -Yuki No Koe-, offer French and Italian cuisine celebrating Hokkaido's superb ingredients.

The restaurant promises a memorable dining experience that will inspire and delight with their unique combination of flavours and art of cooking.

12:00-21:00

[www.setsuniseko.com/en/dining/meli-melo](http://www.setsuniseko.com/en/dining/meli-melo)



## TEPPAN

📍 Park Hyatt Hanazono 🍴 Teppan

Traditional Japanese and French-inspired Teppan menus are carefully prepared at the Teppan counters.

Featuring a premium selection of Wagyu beef, Hokkaido fresh seafood, and locally sourced vegetables.

17:00-21:30 last entry  
(Close on Sundays and Mondays)

[www.hyatt.com/en-US/hotel/japan/park-hyatt-niseko-hanazono/ctsph/dining/teppan#menu](http://www.hyatt.com/en-US/hotel/japan/park-hyatt-niseko-hanazono/ctsph/dining/teppan#menu)



## MOLIÈRE MONTAGNE

📍 Park Hyatt Hanazono 🍴 Japanese - French Cuisine

Showcasing ingredients from the sea and the terroir of Hokkaido, valued through a sophisticated cuisine using traditional French techniques, 3 starred Michelin Chef Hiroshi Nakamichi has championed local premium produce since 1984.

Lunch 11:30 - 14:00

Dinner 17:30 - 19:00 last entry, 20:00 last order  
(Close on Wednesdays)

[sapporo-molieremontagne.com/montagne](https://sapporo-molieremontagne.com/montagne)



## SUSHI MITSUKAWA

📍 Park Hyatt Hanazono 🍴 Sushi

Michelin starred Owner-Chef Mitsukawa will showcase a selection of Kanazawa influenced sushi and sashimi. A selection of fish from Kanazawa's Omicho market will be featured and served on traditional Hokuriku Ohi-yaki plates.

Lunch 12:00 - 13:00 last entry

Dinner 17:00 - 20:00 last entry  
(Close on Thursdays)

[www.sushi-mitsukawa.jp/en/niseko/](https://www.sushi-mitsukawa.jp/en/niseko/)



## KAMIMURA

📍 Hirafu 🍴 French

An iconic michelin-starred French restaurant that defines exquisite dining in Niseko. Its intimate elegant ambience together with stylish interiors offers guests a truly special experience.

Lunch 12:00 - 13:00 (Jul - Oct 2023)

Dinner 18:00 - 20:00

[www.kamimura-niseko.com](https://www.kamimura-niseko.com)



## TOMO

📍 Kabayama 🍴 Contemporary Izakaya

Tomo is a contemporary izakaya that focuses on fresh, quality local ingredients and a social dining experience.

The creative menu includes an intriguing selection of shareable plates with a modern twist, complemented with craft spirits, artisan liquors, and specialty highballs.

[www.tomoniseko.com](https://www.tomoniseko.com)



## Haku Steak

📍 Hirafu 🍴 Steakhouse

Offering a delicious and coveted supply of wagyu delivered from a farm in the quaint Shiraoi Town, seared and crusted in a Jospo oven imported from Spain, Haku Steak champions a modern cuisine that fuses Western, Mediterranean and Japanese food

(Closed on Wednesdays)

[hakulife.com/hakusteak/](https://hakulife.com/hakusteak/)



## KUMO

📍 Hirafu      🍴 Japanese

Kumo called itself “Japanese soul-food by day, a dazzling Hokkaido izakaya by night”.

This fusion Japanese diner serves traditional izakaya favourites as well as dishes inspired by broader Asia, with ingredients sourced from local growers and producers.

[www.kumoniseko.com/](http://www.kumoniseko.com/)



## YAKINIKU GENGHIS KHAN HIRAFU BUTCHER SHOP

📍 Hirafu      🍴 Yakiniku

Delicious Hokkaido wagyu beef, Kobe-beef, genghis kahn and much more.

Wide range of wine and Japanese sake too. Family friendly restaurant.

[www.hirafu-niku.com/](http://www.hirafu-niku.com/)



## BION

📍 East Hirafu Village      🍴 Italian

Bion aims to bring you the best & freshest Hokkaido meat, seafood and seasonal vegetables on a traditional Italian firewood cuisine style.

[bion2202.com/niseko/](http://bion2202.com/niseko/)



## TEMPORADA

📍 Hirafu      🍴 Italian (Temporarily closed)

In an open-kitchen space, Temporada offers more than a dozen different Japanese-inspired tapas. The venue also boasts a fine team of bartender, meaning that it does a mean line in cocktails, too.

[www.temporada-niseko.com/](http://www.temporada-niseko.com/)



## AN DINING

📍 Hirafu      🍴 Modern Japanese

An Dining offers produce inspired fine and casual dining, marrying raw creativity with years of international experience. Using only the freshest hokkaido produce to delight the most discerning of guests palates.

[www.kiniseko.com/dining](http://www.kiniseko.com/dining)



## SOMOZA

📍 Zaborin Niseko 🍴 Contemporary Japanese

Nestled in a forest in Hanazono, Somoza is housed in a beautifully revitalised 150-year-old building that has been transformed into a gallery restaurant. The menus showcase the best of locally sourced ingredients, expertly prepared by French culinary techniques.

17:30-19:00  
(Close on Mondays to Wednesdays)

[www.somoza.jp/en/](http://www.somoza.jp/en/)



## SUZUYA すずや

📍 Iwanai Niseko 🍴 Café

Loved by Iwanai locals, Suzuya is one of the most popular cafés in town.

Offering a wide selection of Japanese local food from Omrice to Soup Curry.

11:00-22:00  
(Close on Wednesdays)



## ISHIMAME 石豆

📍 Makkari Niseko 🍴 Soba

Featuring the traditional freshly made soba noodles, produced using the locally grown buckwheat and fresh Makkari spring water.

11:30-15:00  
(Close on Tuesdays and Wednesdays)



## THE FLATS.

📍 Hirafu 🍴 Japanese - French Cuisine

The lounge, which also functions as a dining bar, is a space to relax and unwind while listening to an elegant playlist and enjoying a glass of whiskey or vintage wine.

<https://theflats.jp/>



## GREEN FARM CAFE

📍 Hirafu 🍴 Cafe

The best coffee in Niseko, roasted in house from carefully selected beans. Breakfast, Lunch and a large selection of takeaway offerings from our deli.

<https://www.greenfarmcafe.com/>



## RISTORANTE PIZZERIA “R NISEKO”

📍 Hirafu      🍴 Italian

Italian cuisine and Neapolitan pizza that make full use of Hokkaido ingredients, created by a chef who used to be the head chef at an Italian restaurant that is difficult to book in Tokyo.

We also have a bar space where you can enjoy Japanese whiskey and beer and wine.

[https://www.instagram.com/pizzeria\\_niseko2022/](https://www.instagram.com/pizzeria_niseko2022/)



## RYU NABE

📍 Hirafu      🍴 Cantonese Hotpot

Located in the heart of Hirafu, Rynabe is a 40-seater upscale Cantonese hotpot. The place is always booked out through the winter months. Apart from dine-in service, they also deliver signature local seafood, Wagyu and unique broths simmered over low heat for 36+ hours right to your door step.

Open 17:30-23:00 daily in Winter

<https://ryunabe.com/niseko/>



## VILLA LUPICIA RESTAURANT

📍 Niseko      🍴 French

Lupicia offers a modern cross cultural cuisine incorporating both European and Japanese ingredients and cooking methods.

Lunch 11:30 - 15:00

Dinner 17:30 - 21:30

(Close on Tuesdays)

[https://villa.lupicia.co.jp/en/index\\_en.html](https://villa.lupicia.co.jp/en/index_en.html)



## IZAKAYA RAKU

📍 Hirafu      🍴 Izakaya

Hokkaido seafood grilled in front of you and served with local seasonal produce.

We also have a nice selection of locally brewed sake.

<http://www.izakaya-raku.com/>



## FUJIZUSHI

📍 Hirafu      🍴 Japanese (Temporarily closed)

Relax in our spacious restaurant and enjoy a wide variety of wonderfully fresh seafood from the shores of Shakotan- sushi. Sashimi, nabe hotpot, rice bowls or ramen.

[www.fujizushi.co.jp/](http://www.fujizushi.co.jp/)



## HANAYOSHI

📍 Hirafu      🍴 Sushi

Famous for their sushi, sashimi, rice bowls, temaki rolls and home made miso soup. Their house specialities are sea food salad with deep fried potatoe and deep fried chicken with vegatables. They also boast an impressive wine/sake/champagne list.

Lunch 11:00 - 13:30  
Dinner 17:00 - 21:00  
(Regularly Closed/ Monday, 2nd Tuesday, 4th Tuesday)

[niseko-hanayoshi.com/](http://niseko-hanayoshi.com/)



## MOKUNOSHO

📍 Annupri      🍴 Japanese

Using a literal treasure trove of ingredients and freshly caught seafood from Uchiura Bay and Iwanai fishing port, enjoy a truly unique dining experience.

[www.mokunosho.com/](http://www.mokunosho.com/)



## L'OCANDA

📍 Hirafu      🍴 Japanese

A family owned italian restaurant serving rustic italian food made with the freshest locally sorced ingredients and classic desserts.

11:30-14:00, 18:00-22:00  
(Closed on Tuesdays / 3rd Wednesday / 1-3 January)

[tabelog.com/hokkaido/A0106/A010603/1042752/](http://tabelog.com/hokkaido/A0106/A010603/1042752/)



## NISEKO PIZZA

📍 Kutchan      🍴 Italian

A family run restaurant offering a menu made with love and the finest quality ingredients. Choose from deliciously hand made wood fired pizzas, freshly made pasta and a great selction on the grill as well as a selection of local and imported beers.

[niseko.pizza](http://niseko.pizza)



## EBISUTEI

📍 Hirafu      🍴 Izakaya

Serving delicious speciality odens to warm you up on a cold day and a range of hand made hear felt cuisine. Also have great Umeshu plum wines.

18:00-24:00 (Winter and Summer only)

<https://tabelog.com/en/hokkaido/A0106/A010603/1029859/>





## BANG BANG & BANG 2 (DEUX)

📍 Hirafu      🍴 Izakaya

One of Niseko's most popular restaurants that serves fresh Hokkaido seafood, char grilled meat, vegetable skewers and other Izakaya favourites.

17:30 - 23:00

[nisekobangbang.com/](http://nisekobangbang.com/)



## SNOW CASTLE

📍 Hirafu      🍴 Japanese

Selected wine and Japanese sake accompany luxurious Japanese dishes prepared by our Executive Chef who hails from an acclaimed Japanese restaurant.

<https://www.chaletivy.com/hirafu/dining/snow-castle/>



## RIN

📍 Hirafu      🍴 Izakaya

With a unique izakaya menu and a cosy atmosphere this dining experience is a fun and memorable one.

18:00 - 22:30  
(Closed on Mondays)

<https://rinjapaneserestaurant.business.site/>



## NISEKO SAKURA

📍 Hirafu      🍴 Japanese/ Hotpot

Delicately selected spices and Chinese medicinal herbs create an excellent 'hinabe' (spicy hot-pot), which just is a perfect match with our Hokkaido wagyu beef. Unwind yourself in a cozy atmosphere with Japanese sake and wine.

[www.niseko.co/](http://www.niseko.co/)



## THE BARN BY ODIN

📍 Hirafu      🍴 French (Temporarily closed)

Authentic French menu combining the best ingredients from France with Hokkaido's freshest produce, meats, and seafood.

<https://www.nisekobarn.com/>



## ICHIMURA SOBA

📍 Hirafu      🍴 Soba

Delicious hand-cut soba noodles made from locally grown Kitawase buckwheat, served with crispy tempura that's highly recommended. It's a truly satisfying dining experience that you won't forget.

11:00 - 15:00 Daily

<http://www.niseko-ichimura.jp/>



## RAKUICHI SOBA

📍 Annupri      🍴 Soba

Step into this charming restaurant with its cozy wooden interior and discover the gem of your trip. The restaurant has garnered a glowing review from Anthony Bourdain on his TV show. It is renowned as a must-visit cultural and food stop in the Niseko area.

Lunch 12:00 - 14:00; Dinner 19:00 - 21:00

<https://www.rakuichisoba.com/>



## YAKITORI TORIMATSU

📍 Kutchan      🍴 Yakitori

A family owned restaurant filled with food lovers. Indulge in a culinary adventure as you savor a tantalizing array of tastes and textures that will delight your sense. The menu features a range of delectable options, including the specialty chicken dishes and some adventurous items!

17:30 - 22:30

(Closed on Sundays)



## GRAUBUNDEN

📍 Hirafu      🍴 Café

Offering a wide selection of sandwiches made with fresh ingredients, as well as fruit cakes, jams, cookies and other tasty goods.

08:00 - 17:00

(Closed on Wednesdays and Thursdays)

<http://www.graubunden.jp/>



## IZAKAYA KOUGETSU

📍 Hirafu      🍴 Izakaya

Grilled squid, giant creamy oysters, juicy homemade dumplings, fried Hokkaido Zangi chicken and hearty vegetable hotpots.

Party menu, Course menu and take away order available.

[kougetsuniseko.com](http://kougetsuniseko.com)



## ROSSO ROSSO

📍 Hirafu      🍴 Steakhouse (Temporarily closed)

Welcome and enjoy our great steaks, a casual ambience and friendly, very knowledgeable staff. A casual steakhouse with a contemporary flavor. Rosso Rosso create an attractive combination for any occasion.

18:00 - 22:00 (Open in Winter)

[rossorosso.la.coocan.jp/](http://rossorosso.la.coocan.jp/)



## BAR GYU+

📍 Hirafu      🍴 Bar

The iconic entrance to Niseko's oldest bar, an old Coke-A-Cola vending machine, gave the unmarked bar its apt nickname 'The fridge door bar'. Vibe is casual, the drinks carefully crafted, the view one of a kind. Cocktails, Whisky, Records.

[www.gyubar.com](http://www.gyubar.com)



## TSUBARA TSUBARA

📍 Hirafu      🍴 Soup Curry

Tsubara Tsubara serves delicious curry made with local ingredients and slow-cooked for 2 days. They also offer hot pot course, tempura and a variety of other dishes you can order separately. It's a popular spot for tasty food.

11:30-14:30  
(Closed on Tuesdays and Wednesdays)

<https://niseko-soupcurry.com/>



## PRATIVO

📍 Niseko Village      🍴 Buffet

The menu makes extensive use of the fresh milk from Takahashi farm and the vegetables that are grown around the district. The western style buffet offers salad, meat, fish and pasta.

Monday - Friday      11:00 - 16:00  
Saturday - Sunday 10:30 - 16:00

<https://niseko-takahashi.jp/prativo/>